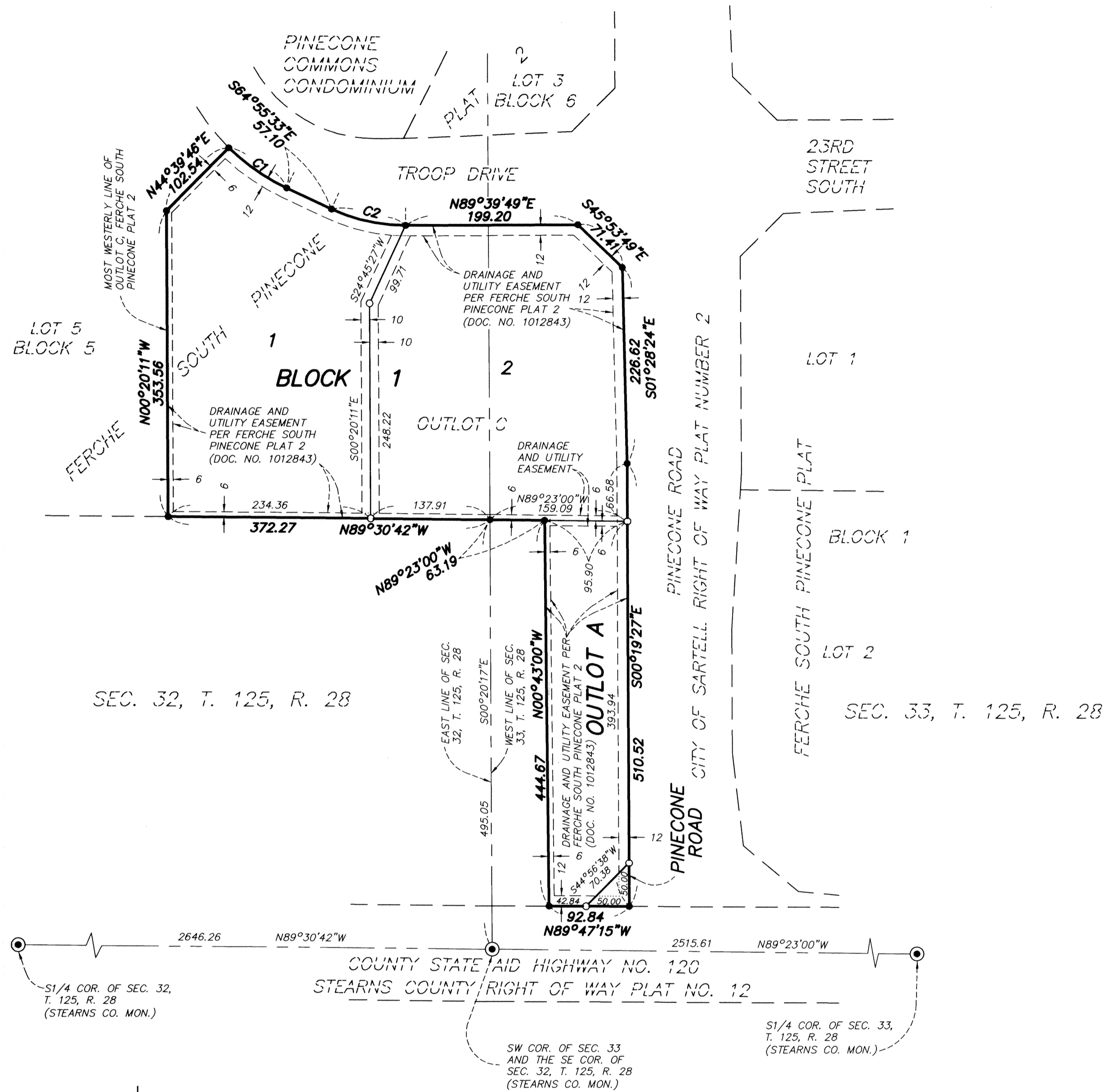


FERCHE SOUTH PINECONE PLAT 5

LOT 1, BLOCK 1 = 91,281 S.F.
 LOT 2, BLOCK 1 = 97,275 S.F.
 OUTLOT A = 40,674 S.F.



KNOW ALL PERSONS BY THESE PRESENTS: That Ferche Development, LLC, a Minnesota limited liability company, owners and proprietors of the following described property, situated in the County of Stearns, State of Minnesota, to-wit:

Outlot C, FERCHE SOUTH PINECONE PLAT 2, according to the recorded plat thereof, Stearns County, Minnesota.

Has caused the same to be surveyed and platted as FERCHE SOUTH PINECONE PLAT 5 and does hereby donate and dedicate to the public for public use forever the road, and also dedicate to the public for public use forever the easements as shown on this plat for drainage and utility purposes only.

In witness whereof said Ferche Development, LLC, a Minnesota limited liability company, has caused these presents to be signed by Jason Ferche, its President this _____ day of _____, 200__.

FERCHE DEVELOPMENT, LLC

Jason Ferche, President

STATE OF MINNESOTA

COUNTY OF _____

The foregoing instrument was acknowledged before me this _____ day of _____, 200__, by Jason Ferche, President of Ferche Development, LLC, a Minnesota limited liability company, on behalf of the company.

NOTARY PUBLIC, _____ COUNTY, MINNESOTA
 MY COMMISSION EXPIRES _____

I hereby certify that I have surveyed and platted the property described on this plat as FERCHE SOUTH PINECONE PLAT 5, that this is a true and correct representation of the survey, that all distances are correctly shown on the plat in feet and hundredths of a foot, that all monuments have been correctly placed in the ground as shown within one year after recording, or sooner, as specified by the approving local governmental unit; that the outside boundary lines are correctly designated on the plat and that there are no wet lands or public highways to be designated other than as shown on the plat as defined in Minnesota Statutes 505.02, Subd. 1.

JEROME C. WITTSTOCK, LICENSED LAND SURVEYOR, MINNESOTA LICENSE NUMBER 19552

STATE OF MINNESOTA

COUNTY OF STEARNS

The foregoing instrument was acknowledged before me this _____ day of _____, 200__, by Jerome C. Wittstock, Licensed Land Surveyor, Minnesota License Number 19552.

NOTARY PUBLIC, _____ COUNTY, MINNESOTA
 MY COMMISSION EXPIRES _____

Approved by the City Council of Sartell, Minnesota, this _____ day of _____, 200__.

SIGNED: _____ MAYOR ATTEST: _____ CITY CLERK

I hereby certify that this plat has been checked and recommended for approval this _____ day of _____, 200__.

STEARNS COUNTY SURVEYOR, MINNESOTA LICENSE NUMBER _____

I hereby certify that the taxes on the land described hereon are paid for the year _____ and all years prior to the year _____ and transfer entered.

Date _____

STEARNS COUNTY AUDITOR/TREASURER

DEPUTY AUDITOR/TREASURER

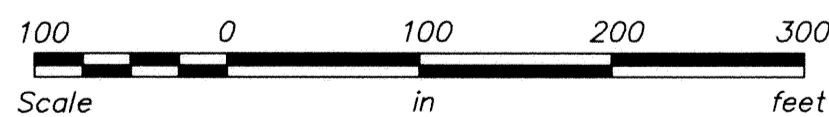
TAX PARCEL NUMBER _____

Document Number _____

I hereby certify that this instrument was filed in the office of the County Recorder for record on this _____ day of _____, 200__, at _____ o'clock _____m. and was duly recorded in Plat Cabinet _____ Number _____.

COUNTY RECORDER, STEARNS COUNTY, MINNESOTA

By DEPUTY



- DENOTES SET IRON MONUMENT
- DENOTES FOUND IRON MONUMENT

BEARINGS ARE BASED THE MOST WESTERLY LINE OF OUTLOT C, FERCHE SOUTH PINECONE PLAT 2 WHICH HAS A RECORD BEARING OF NORTH 00 DEGREES 20 MINUTES 11 SECONDS WEST

CURVE TABLE

CURVE	LENGTH	RADIUS	DELTA	CHORD BEARING	CHORD LENGTH
C1	82.05	240.00	19°35'18"	S55°07'53"E	81.65
C2	88.70	200.00	25°24'39"	S77°37'52"E	87.98

461
 2005.5184